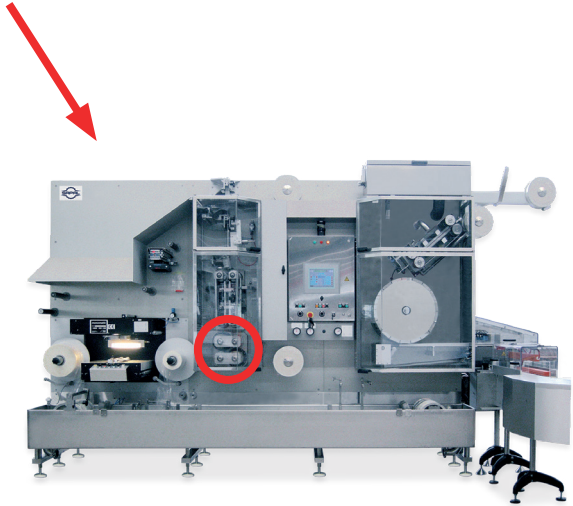
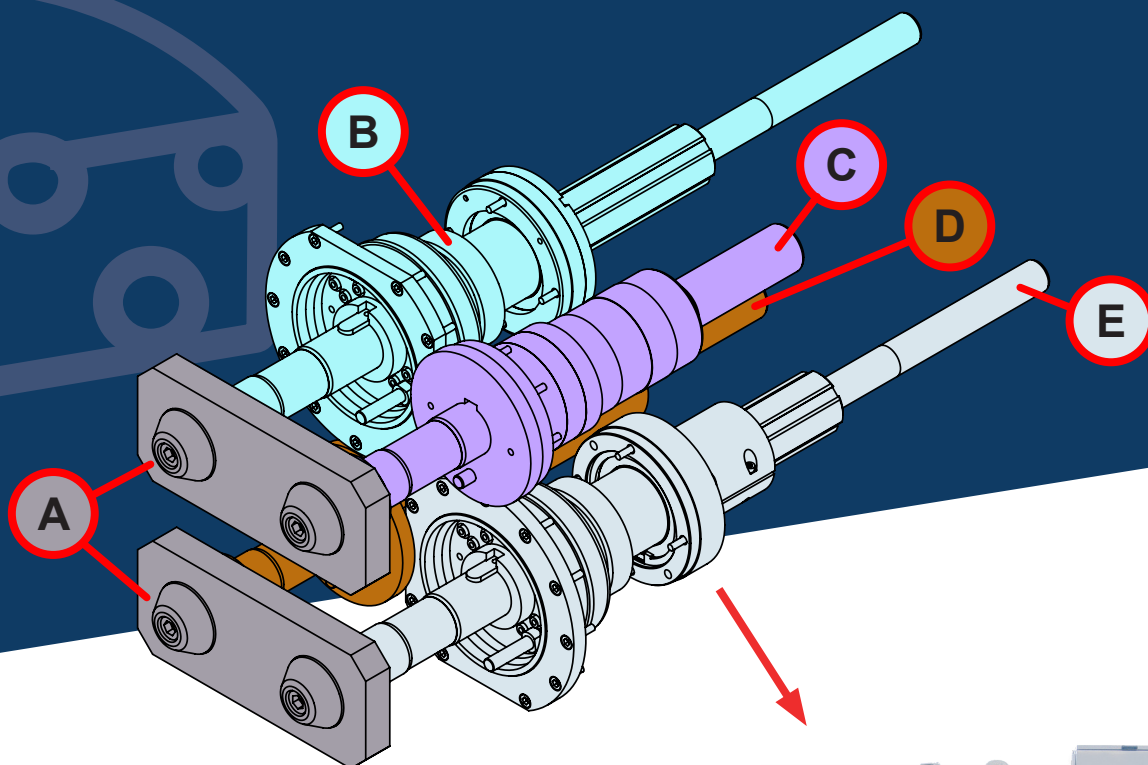


Go for increased equipment availability. Go for kits.



Preventive Maintenance Kit



Standardized Preventive Maintenance Kit for your transversal sealing bearing block for KA-KD-KE-KF-KI, DCS 1000-1 and DCS 2000 (standard or mirror).

Reduce the risk of unexpected downtime and improve your equipment availability.

SAPAL Preventive Maintenance Kits are spare parts packages developed and compiled by our experts. Based on our technical know-how and wide market experience, we define and analyze the wear parts that need to be exchanged regularly. In fact, after approximately 7500 working hours, your process cheese packaging and filling line is subject to a natural and successive wear under usual production conditions.

This Standardized Preventive Maintenance Kit for the assembly group transversal sealing bearing block will help you to avoid any unexpected downtime of your machine.

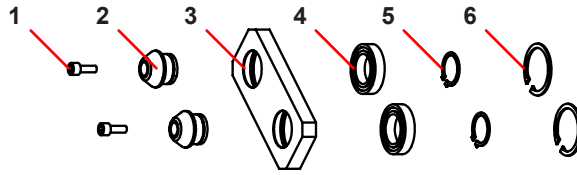
This personalized Sapal's maintenance concept can be combined with a Field Service support. Ask for an offer at service@sapal.ch or get in touch directly with your contact person at Sapal SA.

YOUR BENEFITS

- Reduced inspection costs
- Preferential price
- Optimized planned downtime
- Increased availability

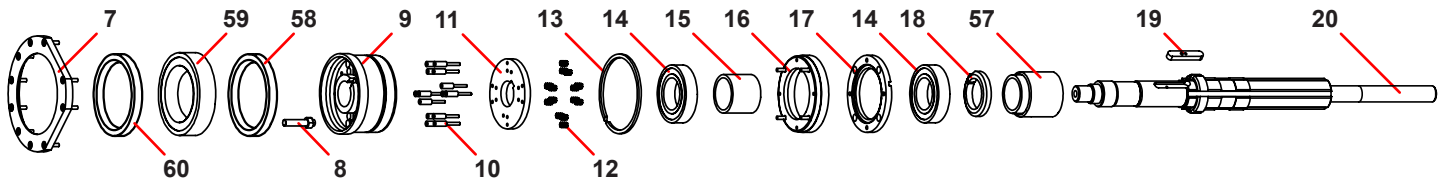
A / SHAFT BEARINGS (2 times per block)

1	HEX SOCKET SCREW INOX M12X30	3	FRONT MOUNTING BLOCK	5	CIRCLIP FOR SHAFT 45x1,75
2	BUSH FOR TRANSVERSAL SEALING	4	BALL BEARING 45x75x16	6	CIRCLIP FOR BORES 75x2,5



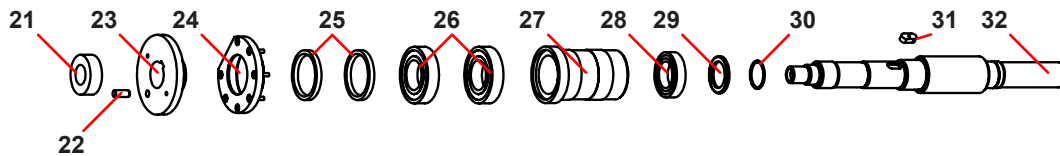
B / HEATING DRUM SHAFT, LEFT, UPPER

7	GASKET HOLDER	13	SPECIAL CIRCLIP (120X4MM)	19	DRIVING KEY 12x8x70
8	SPECIAL PIN	14	BEARING 6210-2RS 50X90X20	20	HEATING DRUM SHAFT LEFT
9	HEATING DRUM DRIVER	15	SPACER	57	RING
10	FEMALE PLUG	16	BEARING REAR	58	SEAL
11	FLANGE FOR CONNECTORS	17	COVER BEARING REAR	59	BEARING
12	HEXAGONAL NUT INOX M4 / WASHER	18	SPACER	60	SEAL



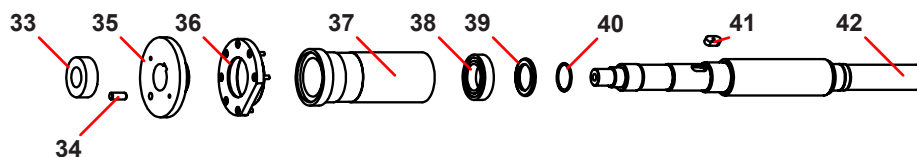
C / COUNTER-DRUM SHAFT, RIGHT, UPPER

21	SLEEVE FOR BRIDLE	25	SEAL BA 60/70x8-NBR	29	SPACER
22	SPECIAL PIN	26	DEEP GROOVE BALL BEARING 45X85X19	30	STOPPING SEG. INA WR 40X1,5
23	FLANGE	27	BEARING TRANSVERSAL BEARING	31	DRIVING KEY 12X8X25MM SCREW M4
24	COVER	28	BEARING 6008-2RS 40X 68X15	32	COUNTER DRUM SHAFT RIGHT



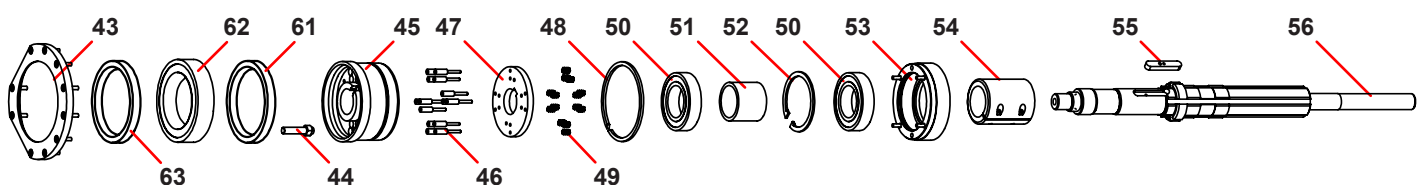
D / COUNTER-DRUM SHAFT, LEFT, LOWER

33	SLEEVE FOR BRIDLE	37	INNER SLEEVE, LONG	41	DRIVING KEY 12X8X25MM SCREW M4
34	SPECIAL PIN	38	BEARING 6008-2RS 40X 68X15	42	COUNTER DRUM SHAFT INFERIOR LEFT
35	FLANGE	39	SLEEVE		
36	COVER	40	STOPPING SEG. INA WR 40X1,5		



E / HEATING DRUM SHAFT, RIGHT, LOWER

43	GASKET HOLDER	49	HEXAGONAL NUT INOX M4 / WASHER	55	DRIVING KEY 12x8x70
44	SPECIAL PIN	50	BEARING 6210-2RS 50X90X20	56	HEATING DRUM SHAFT RIGHT
45	HEATING DRUM DRIVER	51	SPACER	61	SEAL
46	FEMALE PLUG	52	CIRCLIP FOR BORES 90x3	62	BEARING
47	FLANGE FOR CONNECTORS	53	COVER	63	SEAL
48	SPECIAL CIRCLIP (120X4MM)	54	SPECIAL SPACER 48.2X70X82MM		



SAPAL SA

Av. du Tir-Fédéral 44 - 1024 Ecublens - SWITZERLAND - Phone +41 (0)21 633 53 00 - Fax +41 (0)21 633 52 11 - service@sapal.ch - www.sapal.ch